

# Mr.SHOT<sup>®</sup>

## Instant Running Water Heater

### USER GUIDE



Please read this guide carefully before using the product

<b>Contents</b>	<b>Page No.</b>
<b>Index</b> .....	<b>1</b>
<b>Introduction</b> .....	<b>2</b>
<b>Product Features &amp; Manual for installation and use</b> .....	<b>3</b>
<b>Installation Instructions</b> .....	<b>4</b>
<b>Product Components</b> .....	<b>5</b>
<b>Installation Images</b> .....	<b>6</b>
<b>Fixing Instructions</b> .....	<b>7</b>
<b>Knowing How &amp; When the Device Works</b> .....	<b>8</b>
<b>Product Models &amp; Features</b> .....	<b>9 &amp; 10</b>
<b>Accessories List for the respective Models</b> .....	<b>11</b>
<b>Descaling Process &amp; Specifications</b> .....	<b>12</b>
<b>Common Problems And Ways To Handle</b> .....	<b>13</b>
<b>Conclusion</b> .....	<b>14</b>



**Mr.SHOT®** is a novel device designed to supply hot water instantaneously! Comparing to other storage geysers, **Mr.SHOT®** conserves electricity. It is the most advanced heater and as such can be installed anywhere. The specialty of this heater is that it heats only the amount of water economically needed for the use.

**Dear Customer,**

**Welcome to the world of Mr.SHOT® instant running water heater!** Thanks for choosing **Mr.SHOT®** instant electric water heater the most durable, dependable and safe product in the market today.

We are delighted to share that you are a owner of this product, which is first of its kind in India, designed and developed by an exclusive team of experienced professionals. The unique feature is that the geyser is corrosion proof. Tested to withstand any temperature of hot water. The advanced German technology design aids to delay scale formation inside the geyser.

We are pleased to proclaim that we are the manufacturers of India's first 5 models and 9 colors in 1 instant running water heater. Some of the models of **Mr.SHOT®** can be carried anywhere and fitted everywhere based on your convenience.

**Please read this User Guide carefully before using the product for the first time.**

The User Guide will help you to understand the proper handling of the water heater, its installation and work process and use.

You can directly contact the seller in your region or our company for after sales and service of the product.

- ▶ Good appearing, corrosion-proof and unbreakable ABS plastic body.
- ▶ Heats water up to 75° C within 20 seconds.
- ▶ It can be fitted anywhere and everywhere based on your convenience.
- ▶ No pollution, hence environment-friendly.
- ▶ Automatic power cut off in case of over-heating.
- ▶ Auto on or manual reset facility available in some of the models.
- ▶ Thin body design, streamlined appearance, international fashion.
- ▶ Instant use, no need to waste your precious time.
- ▶ Manufactured using advanced techniques and high-precision testing instruments.
- ▶ The essential components of the product meet the ISI standards.
- ▶ Ideal to use in houses, beauty salons, hostels, hotels, schools and factories where there is an instant need of warm/hot water supply (Strictly not for drinking purpose).

## Manual for installation and use

### Attention during installation

- ▶ Except a qualified technician, do not entertain others to dismantle, repair or change the water heater or the wire of the device; failing which may result in fire, electricity leakage, or damage to the product.
- ▶ Ensure proper 3/20 gauge (2.5 Sq.mm) CTS copper wire, 16 A fuse and power plug.
- ▶ Ensure all power and voltage related criteria are met for proper working of the water heater.
- ▶ Use only 220 Volts AC current and 16 A three pin plug. It is required that this device be properly grounded. Do not share the plug base with any other electrical appliances, failing which may cause fire or short circuit.
- ▶ After completing the installation, make sure that the water overflows from the geyser before switching on the heater.

1. This water heater must be installed by an experienced electrician.
2. Fix the water heater at your convenience. Refer to the appropriate pictures and description of the model mentioned in page numbers **xxxxxx**
3. Use connecting tube to connect the water inlet from the faucet and the hot water pipe to the outlet.
4. After completing the installation, turn on the cold / hot faucet and then turn on the power.

**Note:** Ensure the use of proper 3/20 Gauge (2.5 Sq.mm) CTS copper wire, 16 A fuse and power plug. It is unsafe for the children or infirm person to use this appliance without proper adult supervision. **This is not a toy, therefore never allow any children to play with it.**

### **Fix the pipe** (as in the image)

1. Place the water heater at your convenient place.
2. Connect the water inlet / outlet with connecting tube .
3. After finishing installation, turn on the tap; turn on the power after ensuring supply of water coming out from the tap.

**Note:** Use 16 A plug for the power wire.

1. It is required that this device be properly grounded and never dismantle the earthing of the device for any reasons.
2. Don't connect any water control points in the outlet of the device. The outlet is meant only for the outflow of the heated water; therefore never block the water flow, especially when the power is on.
3. If the power wire is not long enough or damaged, ask the electrician to replace it with wire of good quality.
4. After using the device, please switch off the power, then turn off the water valve.
5. Keep the water outlet clean from any blockages, ensuring a smooth water flow.

**Connecting Hose (1.5 Meters):** Connects water inlet and outlet for a smooth flow.

**Royal Union (1 No.):** Essential for secure joint connections.

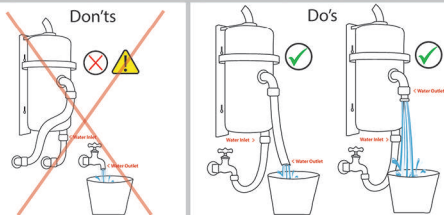
**Connecting Nipple (2 Nos.):** Facilitates proper linking of components.

**Wall Screw (2 Nos.):** For fixing the water heater securely to the wall.

**User Manual (1 No.):** A detailed guide for installation, use, and maintenance.

**Note:** Ensure all components are included in the package before starting the installation process. If any item is missing, contact your seller or the after-sales department for assistance.

## WARNING



- Read and understand the instruction manual and safety messages before installing, operating, or servicing this water heater.
- Failure to follow these instructions and safety messages could result in death or serious injury.
- The manual must remain with water heater.

Follow these steps for the proper assembly of your Mr.SHOT 2.0 instant water heater:

## 1. Place the Water Heater:

- Position the geyser in the method shown in the picture.
- Strictly avoid using other positions that may harm the life of the geyser.

## 2. Connect Water Inlet/Outlet:

- Connect the water inlet/outlet with the connecting tube.
- Use Teflon tape on every water flow joint to avoid leakage.

## 3. Turn on the Tap:

- After finishing installation, turn on the tap to ensure water is flowing properly.
- Turn on the power after ensuring a steady water supply.

## 4. Final Checks:

- Plug into the power supply and ensure water outflow through the geyser.
- Switch on the geyser and enjoy endless hot water.

For a clear understanding, refer to the Mr.SHOT installation videos on the official website or use the QR Code provided. Always use Teflon tape to ensure proper sealing of joints and prevent leakage.

Should use **Teflon** tape  
while connecting all joints

Now plug into the power supply and ensure the water outflow through the geyser. Finally, you can switch on the geyser and start enjoying Mr.SHOT<sup>®</sup>'s heated water endlessly. Use Teflon tape to every water flow joint to avoid leakage.

For a clear understanding of the assembling process, watch the Mr.SHOT<sup>®</sup> installation videos from the channel and also visit the video streaming on our website <http://www.mrshot.co.in>

For further details, you may use the QR Code also.

**Contact Details**



**Youtube Channel**





**All the 5 models of Mr.SHOT<sup>®</sup> has these special features :**

1. Automatic on/off 2. Manual reset mechanism.

## **1. Automatic On/Off :**

After ensuring proper water overflow from the geyser, switch on the power, this results in glowing of the green light. Following 10 seconds after switching on, the hot water starts flowing out. In the instance where there is no water input into the heater, the device heats up the available water up to 70-80°C and then automatically shuts off and is indicated by the glow of red light. There is no need to panic, instead ensure proper water supply into the device or you can just switch off the power supply, if there is no need. In the event of not noticing this, the available water inside the geyser cools down to 40-50°C, the device automatically starts heating up the water resulting in the glow of green light again. If this is not noticed, the same process keeps repeating. (Hence do not use this as on/off of the device). Do not always keep the power on, switch on only when needed.

## **2. Manual Reset :**

After ensuring proper water overflow from the geyser, switch on the power, this results in glowing of the green light. Following 10 seconds after switching on, the hot water starts flowing out. In the instance where there is no water input into the heater, the device heats up the available water up to 70-80°C and then automatically shuts off and is indicated by the glow of red light. There is no need to panic, instead ensure proper water supply into the device or you can just switch off the power supply, if there is no need. If you need continuous supply of hot water, just press the manual reset button once. Now the green light glows indicating regular flow of hot water.

# Mr.SHOT®

## INSTANT RUNNING WATER HEATER

### BASIC MODEL

**Smart**



**Economy**



### PREMIUM MODEL

**Classic**



**Prime**



**Max**



**Amaze**



## 2.0 MODEL

**Walker**



**Jogger**



**Runner**



**Winner**



## VIKRAM 2.0 MODEL

**Walker**



**Jogger**



**Runner**



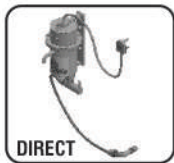
**Winner**



Every model you buy will include these components.

- 1) Connecting Hose 1.5 Meters
- 2) Royal union
- 3) Connecting Nipple
- 4) Wall Screw
- 5) Users manual

### Different ways to use it



Position the geyser in the method shown in the picture, and strictly avoid using other positions which will harm the life of the geyser and will make you ineligible to claim the warranty of the product.



In order to remove the salts and sediments that may accumulate in the device as a result of the contact of hard water on the element for a long period of time, descaling is done. Unlike the other storage geysers, the highlight of **Mr.SHOT®** is that you yourself can do the descaling easily without seeking the assistance of plumber and electrician.

### HOW?

Pour a quantity of 100 ml HCL (that is 20% concentrated) along with 200 ml soft water into the geyser. Leave the geyser for 15 minutes. Shake vigorously, then drain the acid water completely and flush the geyser with fresh water for 2 minutes. Do this process on every 9 to 12 months interval depending on the hardness of water.

If descaling is not done on the device regularly, it may cause delay in the heating time of water, which would increase the power consumption, obviously expend more money and also the life of the device will be affected.

## Specifications

Voltage	: 220 - 240V
Wattage	: 50Hz - 3 Kw
Thermostat & Element	:   Certified
Heating Element	: Coated direct immersion type with patented termination.
Resistance to Water Hardness:	Safe up to 600 ppm

INDICATION OF THE PROBLEM(S)	REASON (S)	POSSIBLE SOLUTION (S)
Water leakage from the water inlet and outlet joint	a) The inlet/outlet joint(s) may not be properly fitted. b) The rubber ring of joint might have been damaged	a) Properly fix the water pipe again b) Replace the new rubber ring
Water is too cold	a) The voltage may be too low b) Water flow may be too high	a) Check the voltage and wait until the voltage becomes normal b) Adjust the water valve to decrease the water flow
Water is too hot	a) Water flow may be too low b) The outlet tube might have been blocked	a) Adjust the water valve according to your desired temperature b) Clean the outlet or allow a smooth water flow
Water temperature: sometimes hot / sometimes cold	a) Voltage may not be stable b) Water flow may not be stable	a) Ensure normal voltage b) Ensure normal water flow
The switch is shut down or the fuse is burnt	a) The fuse wire may be too thin or the switch /plug may be too old or worn out	Replace with 16A fuse wire or replace the switch/plug
The power indicator light is not glowing	a) May not be connected the power	a) Connect to the power supply

**Remarks:** Even after trying all these possible solutions, if the problem still persists, please contact your nearest service center or the dealer from which the purchase has been made, or our after sales and service department.

**Do not dismantle the machine by yourself at any cost.**

Thanks for buying our **Mr.SHOT®** instant electric water heater.

For any service and support of **Mr.SHOT®**, you can directly contact our seller in your region or the after sales and service department of our company. We will be pleased to be at your service.

**In order to serve you better, please pay attention to the following details:**

1. The product is guaranteed for a period of one year from the date of purchase during which any repair/defects can be brought to the local maintenance department along with the invoice and warranty card. We will not be able to undertake the maintenance or service of your device without producing the warranty card (or) invoice, so keep it carefully.
2. In case of any problems or non-working of the device, you should not dismantle or reassemble the product, otherwise the product will lose its warranty right.
3. Our company will not take any responsibility for the accidents or any other mishandling of this device.
4. For the convenience of product maintenance, please preserve the carton of the product.

We believe that we have given you a useful and a long-lasting product in your hand!!  
Enjoy the benefits of **Mr.SHOT®** in your place!!!

Thank you!  
**Jai Hind!!!**





## Instant Running Water Heater

Model :

Quantity : One

Manufactured and Marketed by :



**YES WE ASSOCIATES**

AN ISO 9001:2015 CERTIFIED COMPANY

162-163, Rasi Building, Ponnaiah Rajapuram, Opp. Seetharam Hospital  
Coimbatore - 641 001, Tamil Nadu, INDIA.

Phone : +91 422 4 951 951 Cell : +91 93641 53797

[www.mrshot.co.in](http://www.mrshot.co.in)